

WASTE SEPARATION GUIDE

ORGANICS

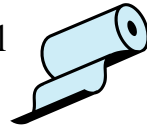
Green cart

All fruits, vegetables & peelings
All meat, fish, & bones
Bread products
Coffee grounds & filters
Dairy products
Eggs & shells
Lobster, clams & shellfish
Pasta, grains, & rice
Pet waste & kitty litter
Tea leaves & bags



Soiled Paper Products

Damp & soiled papers
Food napkins & paper towel
Kleenex
Paper plates & pizza boxes
Paper sugar, flour & potato bags
Paper fast food wrappers



Yard Waste

Leaves & weeds
Sawdust & wood shavings
Small branches & plants



Compostable or paper bags may be used in the green cart.

NO PLASTIC

RECYCLABLE

Clear non-coloured or transparent blue bags

Aluminum cans
Aluminum pie plates & foil
Books— soft & hard covers
Boxboard— cereal boxes
Clear plastic wrap
Cookie sheets
Corrugated cardboard
Detergent boxes
Empty paint & aerosol cans
Envelopes & greeting cards
Glass food & beverage containers
Juice boxes
Magazines & phonebooks
Milk cartons
Newspaper & flyers
Office paper (including shredded paper)
Paper egg cartons
Plastic bags
Plastic beverage & food containers
Plastic containers
Pots & pans
Steel & tin cans



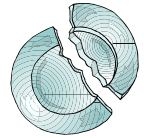
****Please note****

All items must be clean.
Remove caps from bottles - place in garbage.
No food waste.
Styrofoam is garbage.

GARBAGE

Clear non-coloured bags

Bandages
Broken glass, ceramics & dishes
Calculators & pens
Candy bar wrappers
CDs, cassettes & video tapes
Cigarette butts & ashes
Cookie bags & chip bags
Diapers
Disposable coffee cups
Disposable razors
Dog & cat food bags
Empty motor oil containers
Gift bags
Laminated items
Light bulbs
Liners from cereal boxes
Meat trays
Netted onion bags
Photographs
Plastic utensils
Sanitary products
Small appliances (toasters, coffee pots)
Straws
Styrofoam
Toothpaste tubes
Toys
Vacuum cleaner bags
Wrapping paper & tissue paper



December 2015

SORTING TIPS

- ♦ Garbage must be placed in clear non coloured bags. Black bags are not accepted at the Cumberland Central Landfill.
- ♦ Organics can be placed in paper or compostable bags within the green cart. NO Plastic is to be placed in the green cart.
- ♦ At home, make sure your material is out on time and placed no more than 3m from the curb.
- ♦ Remove caps from bottles and jars.
- ♦ Wrapping paper and tissue paper are garbage.
- ♦ Disposable coffee cups are garbage.
- ♦ Styrofoam is not recyclable and must be placed in the garbage.

Please like us on facebook at
"Cumberland Central Landfill"



RECYCLING PROGRAMS

www.call2recycle.ca - Household batteries and cellphones can be taken to a number of locations in Cumberland County. For a drop off location near you visit www.call2recycle.ca



Textiles - keep textiles out of the landfill. Visit www.afterwear.ca for drop off locations near you.

www.epra.ca - electronic recycling program. Electronics are banned from landfill disposal. You can bring your end of life electronics to an EPRA drop-off centre free of charge.



www.recyclemycell.ca - cell phone recycling program. By using Recycle My Cell, you'll be able to find a drop-off location in your area that will accept your cell phones, smartphones, wireless PDAs, batteries and pagers. If you can't get to one of the drop-off locations, you can send your device through the mail, free of charge!

Tires - up to 4 vehicle tires can be returned to any tire retailer at any one time.

USED OIL **Waste Oil** - retailers that sell motor oil must either accept used oil or provide a drop-off location within 5kms of the original purchase site.

Safe Sharps Program - residents can pick up free sharps containers at their pharmacy. Used syringes, lancets, and needles go into the containers; the containers can be taken back to the pharmacy for proper disposal.



Construction & Demolition (C&D) - C&D (wood, gyproc, windows, etc.) can be taken to the Cumberland Central Landfill.

Household Hazardous Waste - HHW can be disposed of at free events held by Cumberland Joint Services. Call 902-667-5141 or 1-888-711-5925 for more information.



Paint - leftover paint can be taken to any ENVIRO-DEPOT™ - free of charge.

Scrap Metal - scrap metal can be taken to the Cumberland Central Landfill for recycling. Appliances containing freon are subject to a \$20.00 charge for freon removal.



CUMBERLAND JOINT SERVICES MANAGEMENT AUTHORITY
SOLID WASTE SERVICES

Visit our website at www.cjsma.ns.ca or
phone 902-667-5141 or 1-888-711-5925.